

COPPERFIELDS

THE COPPERFIELD CENTRE
DARTFORD



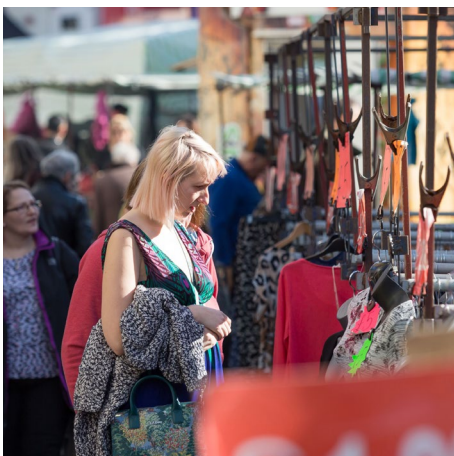
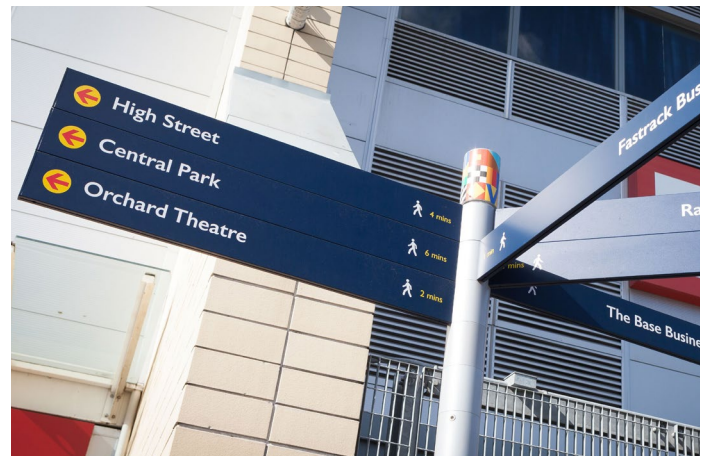
LOCATION

Dartford is a town in North Kent located approximately 19 miles south east of Central London and approximately 22 miles north west of Maidstone. Road links are excellent with the town being mere moments from the A2 and in turn the M25 and Dartford Crossing. Commuters and visitors to the Capital can enjoy a regular train service with journey times of just 40 minutes.



According to the 2011 census report there are approximately 97,000 residents. Dartford is also home to several grammar schools with 'excellent' and 'outstanding' OFSTED accreditations.

The town has a long standing tradition of hosting markets. There is currently a weekly market, selling greengrocery, fashion and refreshments, on Thursday and Saturday, plus a Farmer's market every 3rd Friday of the month.



COPPERFIELDS

The Copperfield Centre is located off Spital Street, adjacent to the pedestrianised High Street. The entrance to the Priory Centre is opposite where occupiers include The Works, Easy Coffee, Sainsbury's and Wilko to name just a few. Car parking is nearby, either at The Priory Centre or Spring Vale car park.



Copperfield comprises a mixed-use scheme of 13 units set out over ground floor level within a courtyard environment.

Occupiers include a variety of uses including a café, nail bar and financial services



AVAILABILITY

The following two units are available by way of new, effectively fully repairing and insuring leases, for a term of years to be agreed, with commencing rental from £12 psf per annum. Both units benefit from A3 (restaurant) use but can also be used for A1 (retail) and A2 (financial services) uses.

The landlords would also consider other uses, for example D1 (education & training and medical) and D2 (gym), subject to the necessary consents being obtained.

UNIT NO.	AREA	SQ FT	SQ M	EPC RATING	RATEABLE VALUE
3 & 4	Ground Floor	2,480 sq ft	230.39 sq m	C	TBC
5 & 6	Ground Floor	2,495 sq ft	231.79 sq m	D	TBC

The accommodation is considered suitable for a sole occupier or with the potential to subdivide, subject to contract, to provide c 1,000 sq ft to c4,975 sq ft.

CONTACT DETAILS

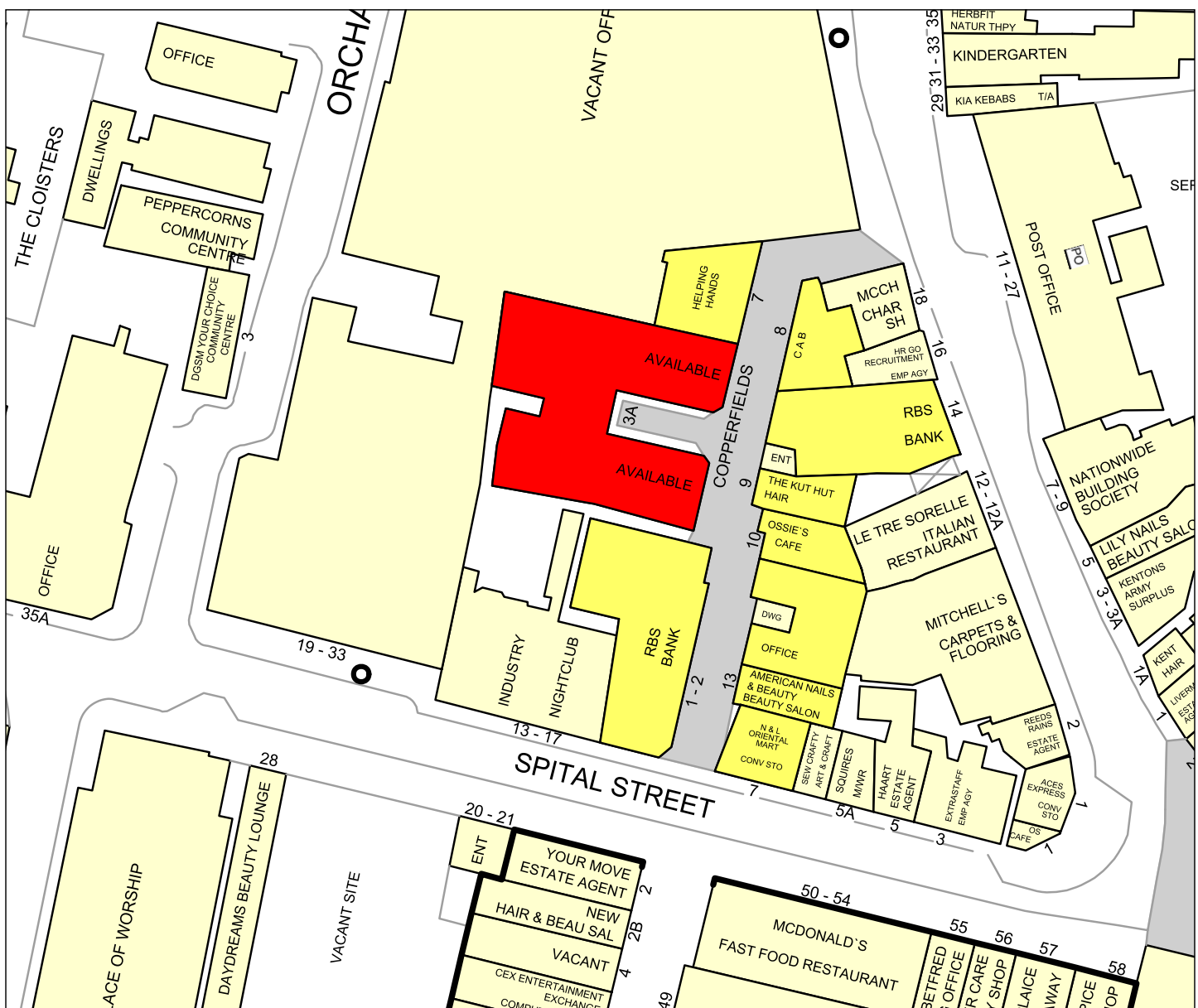
For further information or to make arrangements to view, please contact retained agents:

Emma Clarke
Cradick Retail
01892 707512
07799 604406
eclarke@cradick.co.uk
www.cradick.co.uk

Matt Ritson
Cradick Retail
01892 707500
07484 022795
mritson@cradick.co.uk
www.cradick.co.uk

Mandeep Cheema
Linays
01689 875 511
07436 548412
mc@linays.co.uk
www.linays.co.uk

STREET TRADERS PLAN



Copyright and confidentiality Experian, 2019. © Crown copyright and database rights 2019. OS 100019885

For more information on our products and services:
www.experian.co.uk/goad | goad.sales@uk.experian.com | 0845 601 6011

SUBJECT TO CONTRACT AND VAT (IF APPLICABLE)



Cradick Retail LLP for themselves and the vendors of this property whose agents they are give notice that: 1) The particulars are set out as a general outline only for the guidance of intending purchasers or lessees, and do not constitute, nor constitute part of, an offer or contract. 2) All statements contained in these particulars as to this property are made without responsibility on the part of Cradick Retail LLP or the vendor or lessor. 3) All descriptions, dimensions, references to condition and necessary permission for use and occupation, and other details are given in good faith and are believed to be correct, but any intending purchasers or tenants should not rely upon them as statements or representations of fact and must satisfy themselves by inspection or otherwise as to the correctness of each of them. 4) No person in the employment of Cradick Retail LLP has any authority to make or give any representation or warranty whatever in relation to this property. We are fully registered under the Data Protection Act 1998 and personal data is collected, held and processed by us in accordance with the Act. For a full copy of our privacy policy, please refer to our website www.cradick.co.uk.