

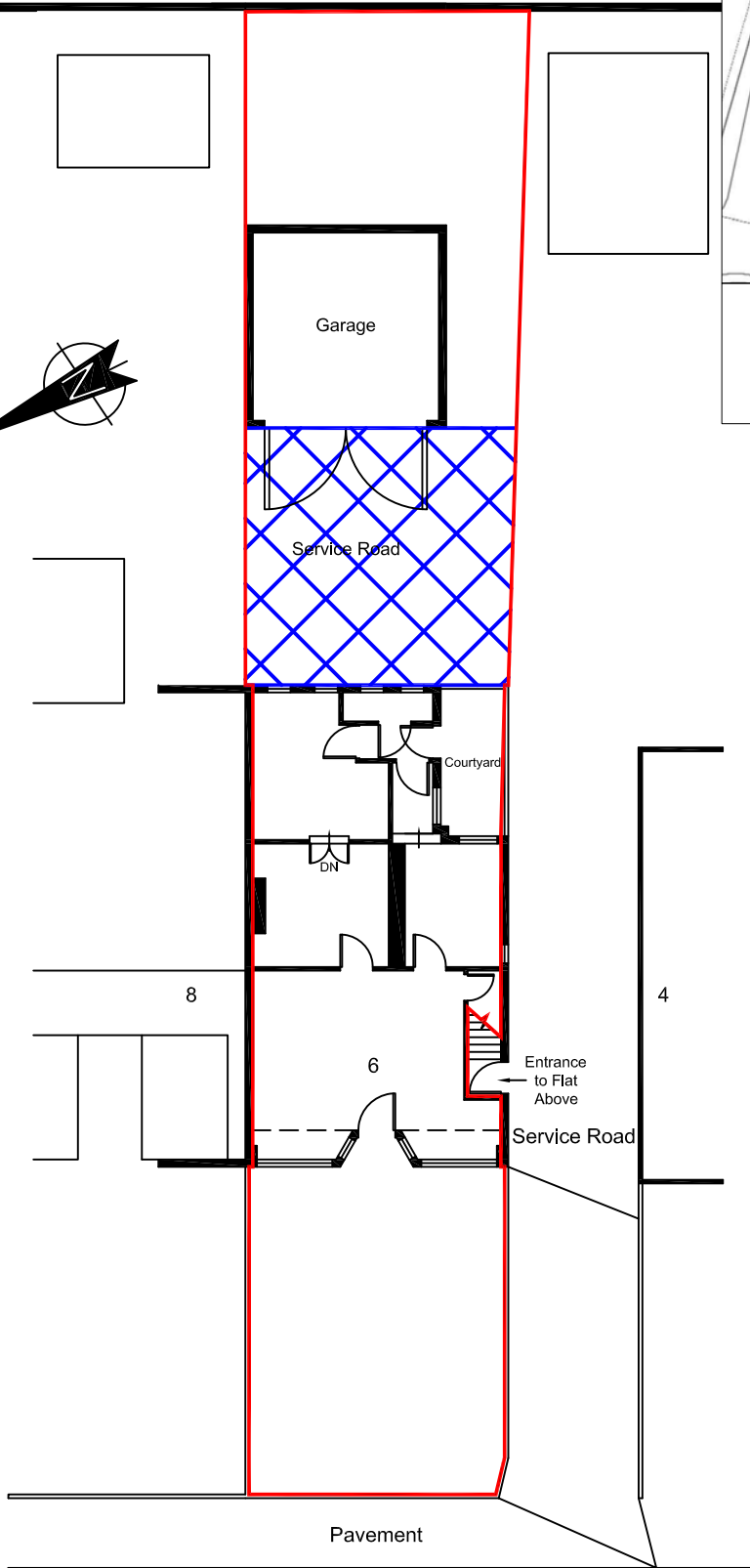


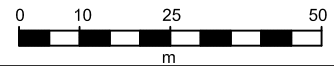
Key:

-  Demise of Premise
-  Right of Way



Location Map

Scale: 1:1250



Ground Floor

Note: To ensure correct scaling when printing select paper scaling "Option None"

6 Marion Crescent, Orpington, Kent, BR5 2DD

date
16.10.2017

dwg.no.

Ground Floor Net Area. 101.74 sq.m.

scale
1:200 at A4

revision
v0.A

