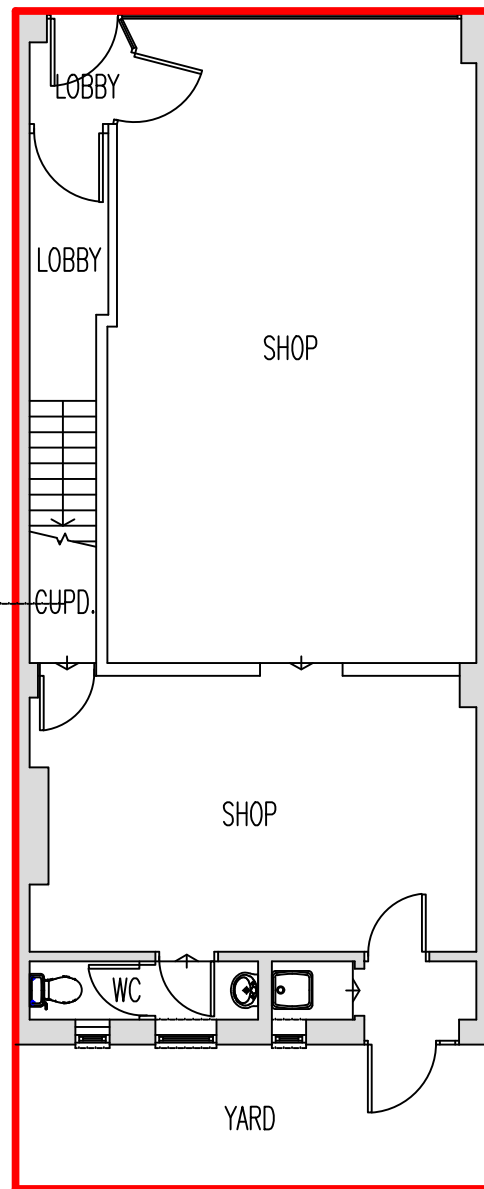
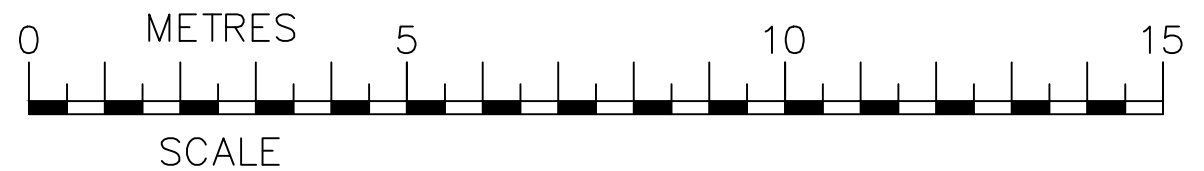
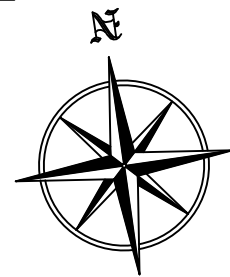


HIGH STREET, WEST WICKHAM

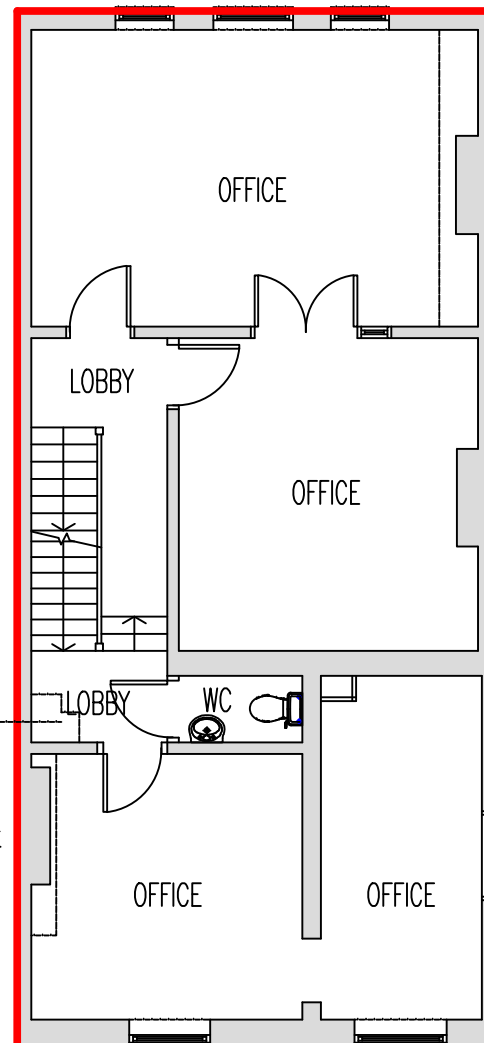
PUBLIC PAVEMENT



- contains:-
- electricity meter
 - electricity consumer unit

Existing Ground Floor Plan (1:100)
(GIFA = 78.0 SQ.M/840 SQ.FT)

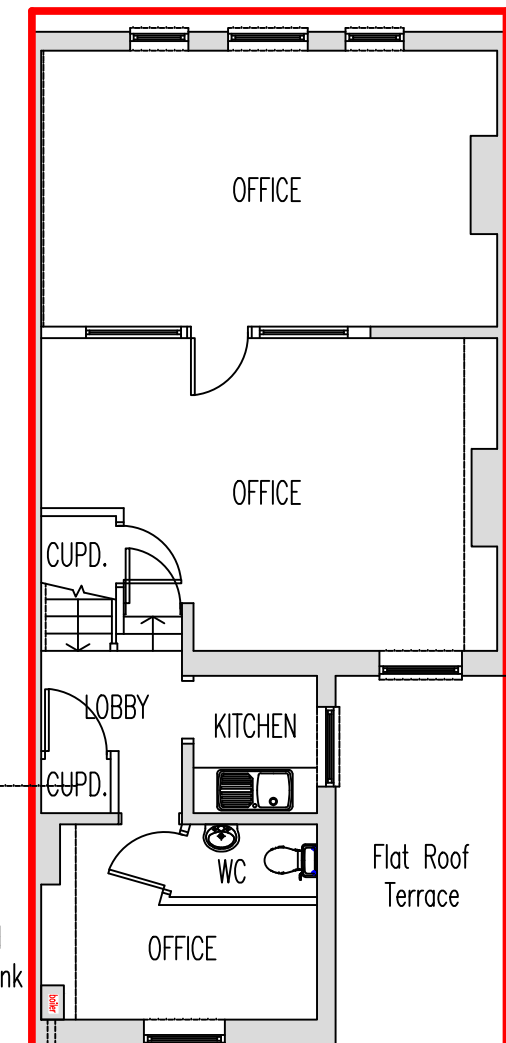
(NIFA, I.E. MINUS WC AND LOBBIES, = 67.4 SQ.M/725 SQ.FT)



- cabinet containing:-
- gas meter
 - electricity supply head
 - electricity consumer unit

Existing First Floor Plan (1:100)
(GIFA = 77.6 SQ.M/835 SQ.FT)

(NIFA, I.E. MINUS WC AND LOBBIES, = 66.4 SQ.M/715 SQ.FT)



- contains:-
- electricity main switch
 - electricity consumer unit
 - boiler pressure valve
 - water stop cocks for cold water tank and kitchen sink

Existing Second Floor Plan (1:100)
(GIFA = 65.6 SQ.M/706 SQ.FT)

(NIFA, I.E. MINUS WC AND LOBBIES, = 59.5 SQ.M/640 SQ.FT)

FNH PROPERTY SERVICES

Hillside
London Road
West Kingsdown
Sevenoaks
TN15 6EX

Mob: 07949 928 170
Email: fethi.huseyin@outlook.com

CLIENT

Fastgrow Investments Ltd

JOB

38-40 High Street, West Wickham, Kent BR4 0NJ

TITLE

Floor Plans

SCALE
1:00 @ A3

DATE
November 2020

FH

FH

JOB NO.
201110

DRAWING No.
01

REVISION

DATE